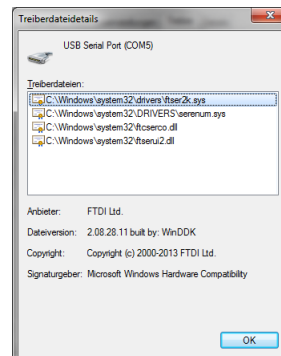
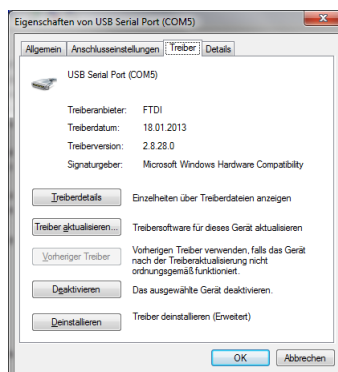
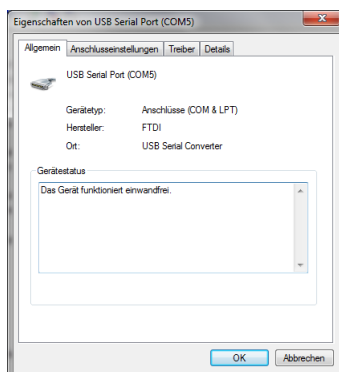
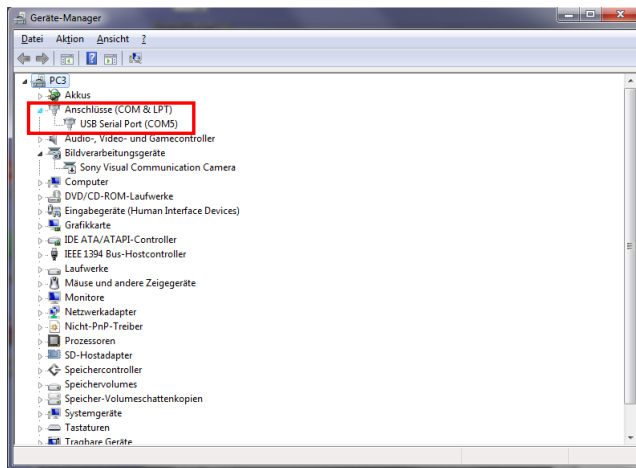
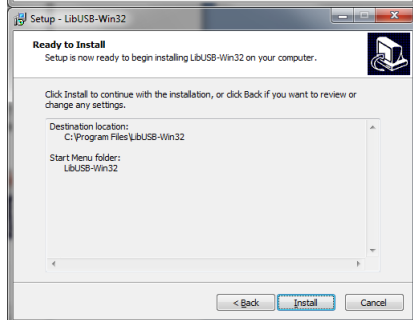
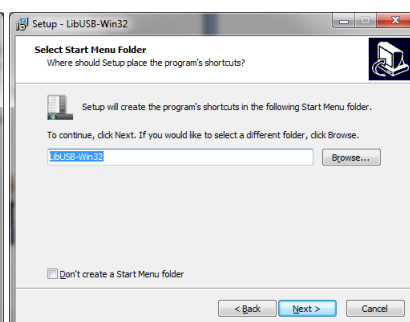
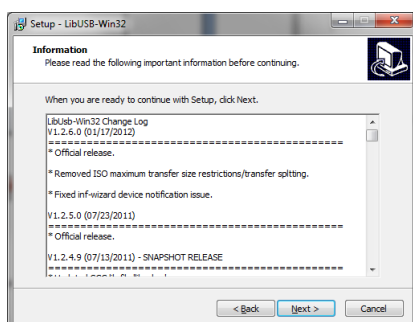
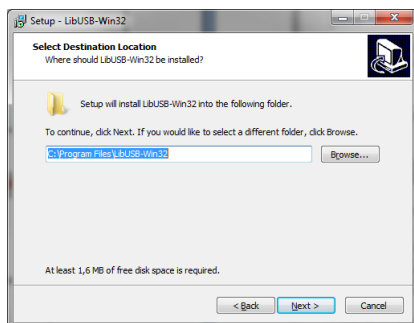
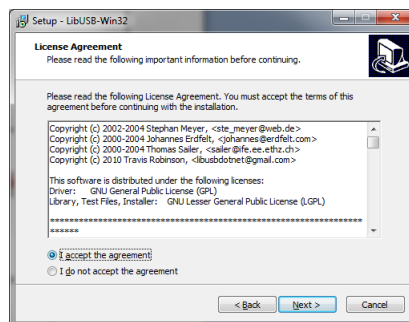
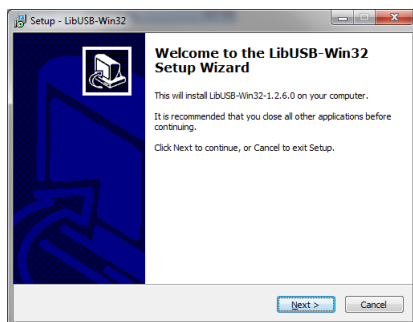
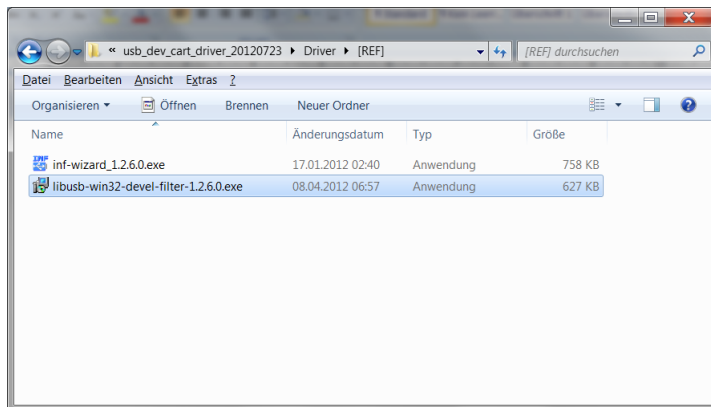


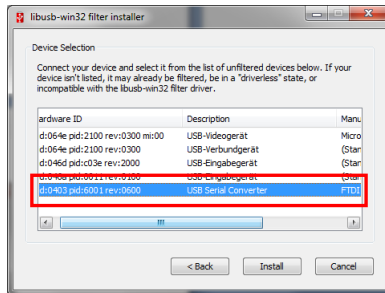
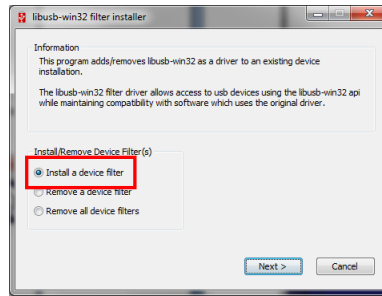
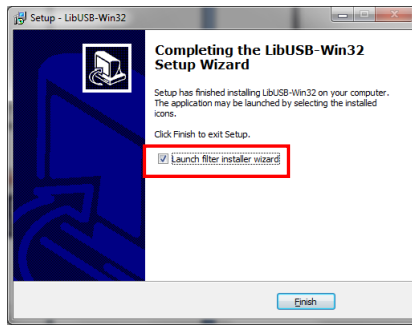
## SEGA Saturn USB Devcard with Windows 7 64Bit

- Download and extract the following  
[http://ppcenter.free.fr/satcart/SatLink\\_20120723.7z](http://ppcenter.free.fr/satcart/SatLink_20120723.7z)  
[http://ppcenter.free.fr/satcart/usb\\_dev\\_cart\\_driver\\_20120723.7z](http://ppcenter.free.fr/satcart/usb_dev_cart_driver_20120723.7z)  
[http://www.rockin-b.de/saturn/minesweeper/MineSweeper2003\\_060103\\_src.7z](http://www.rockin-b.de/saturn/minesweeper/MineSweeper2003_060103_src.7z)
- Power off your Saturn.
- Plug your USB dev cart into your Saturn memory cartridge port.
- Connect your USB dev cart to your PC via USB.
- Turn your Saturn ON.
  - A blue/green blinking screen appears on Saturn.
  - If connected for the first time, Windows is searching for drivers over the internet and installs the USB Serial Port driver.

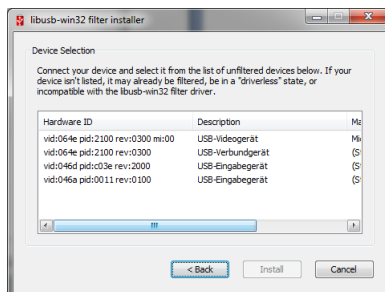
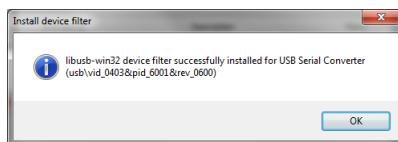


## Install the libusb filter driver



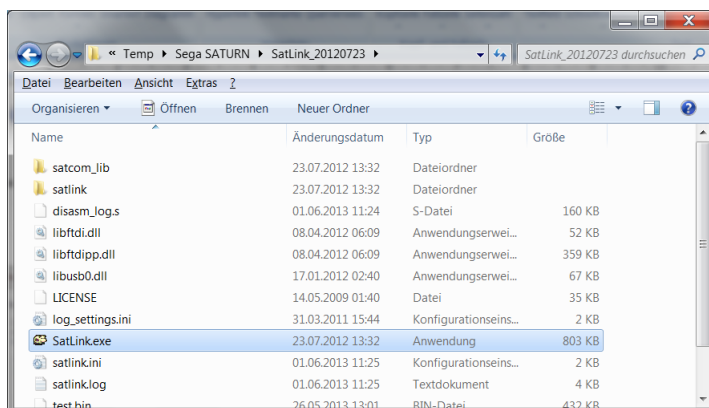


Select the previous installed USB Serial Converter (FTDI Manufacturer)

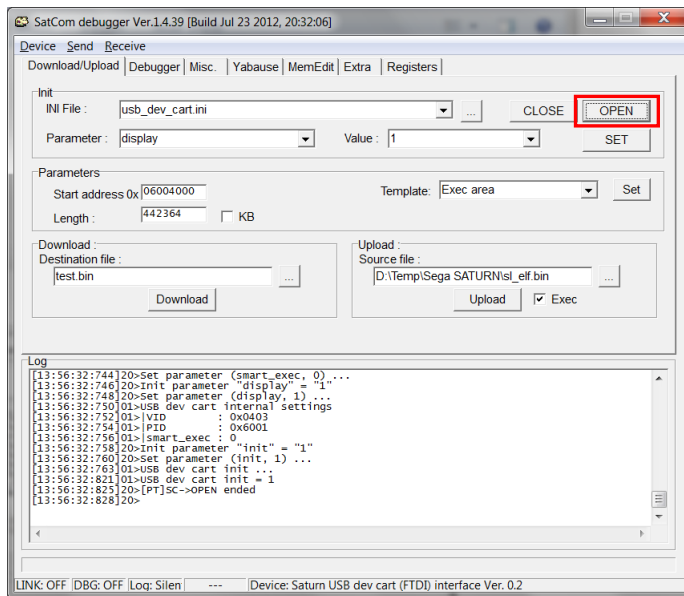


USB Serial Converter (FTDI Manufacturer) not listed for filter installer anymore -> installation completed.

Test the connection with SatLink.exe



## Open Communication



## Upload and run Program (from folder MineSweeper2003\_060103\_src)

